



Concassé®

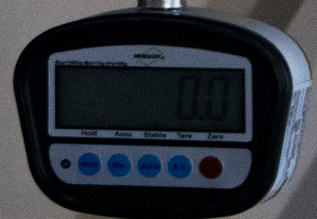
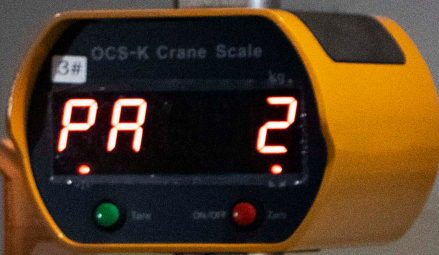
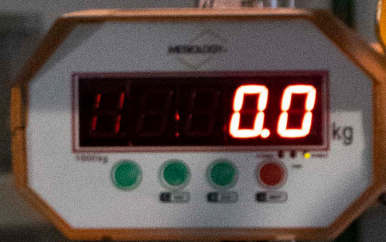
CATALOG



WWW.BASCULASMETROLOGY.COM.MX

TABLE OF CONTENTS

	PAGE
BARCODE AND LABELING SCALES	5
PRICE COMPUTING SCALE	8
PORTIONING SCALES	10
DIGITAL PRECISION BALANCES	12
COUNTING SCALES	14
RECEIVING AND WAREHOUSE SCALES.....	17
HAND PALLET JACK SCALES.....	20
HANGING/CRANE SCALES.....	25
WEIGHING INDICATORS.....	28
LOAD CELLS.....	33
JUNCTION BOX.....	37
PATTERN WEIGHTS.....	38
BATTERIES & CHARGERS.....	39
LABEL & TICKETS.....	41
TRUCK SCALES.....	43





BARCODE AND LABELING SCALES

Model A1

- 5990 PLU's
- 20 Shortcut Keys
- Ethernet, RJ-485, USB
- Ticket Printer



Model A2

- 5990 PLU's
- 80 Shortcut Keys
- WiFi, RJ-485, USB
- Generate Barcode



Model BIE-60C

- Hanging Span
- Capacity 60lb / 0.02lb
- 5990 PLU's
- Network Connection
- Generate Barcode



Model BCR-60P

- With Pole
- Capacity 60lb/0.02lb
- 5990 PLU's
- Ethernet, RJ-45, USB
- Generate Barcode
- Pan size 8 1/2" x 12 1/2"



Model MEGABIE-60P

- With Pole
- Capacity 60lb / 0.02lb
- 5990 PLU's
- Wi-Fi Network Connection
- Generate Barcode
- Pan size 11" x 15 3/4"



Model MEGABIE-60

- Without Pole
- Capacity 60lb / 0.02lb
- 5990 PLU's
- Wi-Fi Network Connection
- Generate Barcode
- Pan size 11" x 15 3/4"



Model BIE-60P

- With Pole
- Capacity 60lb/0.2lb
- 5990 PLU's
- Ethernet, RJ-45, USB
- Generate Barcode
- Pan size 8 1/2" x 12 1/2"

Báscula Electrónica (Peso-Precio) Modelo BPP-40

0.0000

0.0000



Max 10kg Max 40kg

0.0000

6	7	8	9	⌘
2	3	4	5	⌘
1	0	.	⌘	⌘
M1	M2	M3	M4	⌘

PRICE COMPUTING SCALE

Model BPP-80

- Capacity 80lb / 0.01lb
- 6 Shortcut key's
- Double LCD display
- SS Pan, size 12" x 9"
- Rechargeable Battery 100h



Model BPP-80RS

- Capacity 80lb / 0.01lb
- Serial Port RS-232 to POS
- 6 Shortcut key's
- Double LED display
- SS Pan, size 12" x 9"
- Rechargeable Battery 100h



Model BPP-80W

- Capacity 80lb / 0.01lb
- Waterproof IP-66
- 6 Shortcut key's
- Double LED display
- SS Pan, size 12" x 9"
- Rechargeable Battery 100h

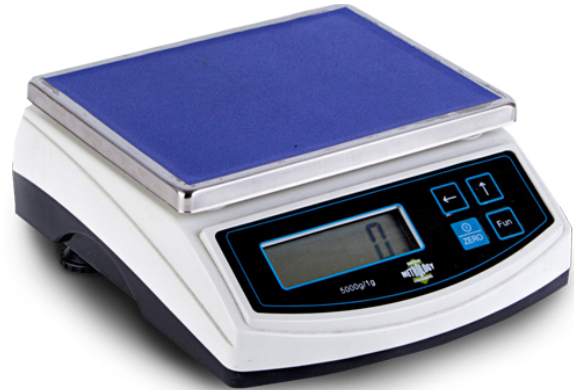




PORTIONING SCALES

Model BCH-5000

- Capacity 10lb / 0.002lb
- Multi-units weight
- Over-Under function
- LCD Display
- SS Pan, size 7" x 5 1/2"
- Alkaline Battery "AAA"



Model BMP

- Capacity 6lb, 12lb, 30lb, 60lb
- Multi-units weight
- Over-Under function
- Red LED Display
- SS Pan, size 10 1/2" x 8 1/2"
- Rechargeable Battery 100h

Model BMP

- Capacity 6lb, 12lb, 30lb, 60lb
- 6 Shortcut key's
- Double LED display
- SS Pan, size 12" x 9"
- Rechargeable Battery 100h



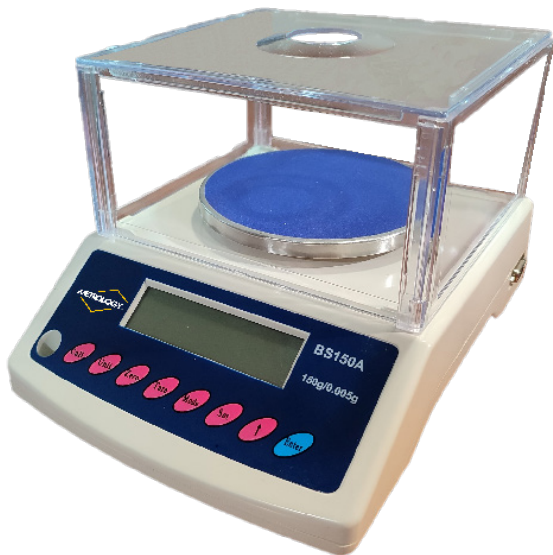
MODEL BM-150



DIGITAL PRECISION BALANCE

Model BM-12

- Capacity 24lb / 0.0002lb
- Multi-Units weight
- Over-Under function
- LCD Display
- SS Pan, size 10¹/₂" x 8¹/₂"
- Rechargeable Battery 100h



Model BM-150

- Capacity 0.3lb / 0.00001lb
- 13 Multi-Units of weight
- LCD Display
- RS-232 Serial Port
- Multi-Functions
- SS Circular Pan



Model BM-2000

- Capacity 4lb / 0.00002lb
- 4 Multi-Units of weight
- LCD Display
- Multi-Functions
- SS Circular Pan



Model BEM

- Laboratory Balance
- 13 Multi-Units weight
- LCD Display
- RS-232 Serial Port
- Multi-Functions
- SS Circular Pan



Model BEM

- Laboratory Balance
- 13 Multi-Units weight
- LCD Display
- RS-232 Serial Port
- Multi-Functions
- SS Circular Pan

COUNTING SCALES

Model BCP

- Capacity 12lb, 30lb, 80lb
- RS-232 Serial Port
- 6 Shortcut Keys
- Platform Connection



Additament for Counting scale model BPRL

- *Capacity 300lb, 600lb,1000lb
- Size 17.7" x 23.6"
- Adjustable Leveling feet with ball joint

Weighing, Printing, Counting Indicator Model A1-C

- 990 PLU's
- 20 Shortcut Key
- Ethernet, RJ-485, USB
- Ticket Printer



Weighing, Labeling, Counting Indicator Model A2-C

- 5990 PLU's
- 20 Shortcut Key
- Ethernet, RJ-485, USB
- Ticket Printer





RECEIVING AND WAREHOUSE SCALES

Movable Receiving Scale Model BPDUO

- Capacity 400lb
- Pan Size 19.6" x 19.6"
- Cash Register Function
- Double Handlebars
- SS weighing indicator



Receiving Scale with Stainless steel pan Model BPPR-200

- Capacity 200lb/0.05lb
- SS weighing indicator
- Cash Register Function
- Stainless Steel Pan
- Pan Size 153/4" x 191/2"

Heavy Duty Receiving Scale model BPR

- Capacity 300lb, 600lb,1000lb
- SS weighing indicator
- 3 operation modes
- Display Full LED
- Serial Port RS-232

HD
HEAVY-DUTY

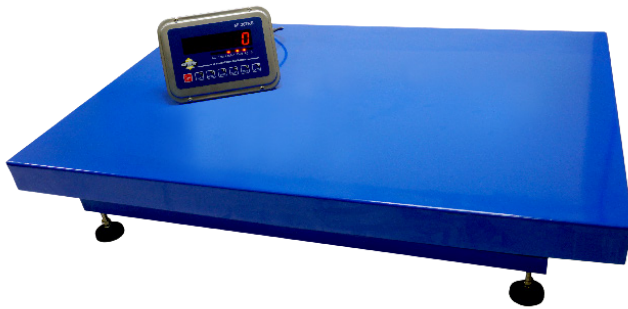


Heavy Duty Movable Receiving Scale model BPX

- Capacity 1000lb, 2000lb
- SS weighing indicator
- 3 operation modes
- Display Full LED
- Serial Port RS-232

- Pan size:
BPX 1000 (23" x 31")
BPX 2000 (35" x 39")

- 4 Heavy Duty wheels for easy movement



Heavy Duty Floor Receiving Scale model BP

- Capacity 400lb, 800lb, 1000lb
- SS weighing indicator
- 3 operation modes
- Display Full LED
- Serial Port RS-232



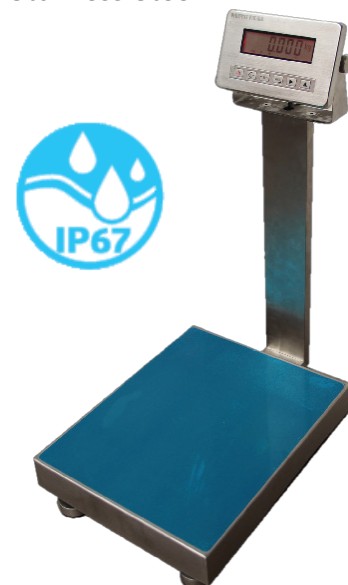
SS Waterproof Scale Model BPW

- Capacity 12lb, 60lb
- 3 Operation mode
- LCD Display with back light
- Sealed IP-67
- 100% Stainless Steel



SS Waterproof Scale Model BPW

- Capacity 120lb, 300lb, 600lb
- 3 Operation mode
- LCD Display with back light
- Sealed IP-67
- 100% Stainless Steel





HAND PALLET JACK SCALES, FLOOR SCALES & LIVESTOCK SCALES



Pallet Jack Scale Model PYB-4000

- Capacity 4000lb
- SS Wight Indicator
- 3 operation modes
- Display Full LED
- Serial Port RS-232
- Reinforced Pallet



Floor Scale Platform Model PBP

- 4 Nickel Plated Steel load cell IP-67
- SS weighing indicator
- 3 operation modes
- Display Full LED
- Serial Port RS-232
- Waterproof Junction Box IP-67

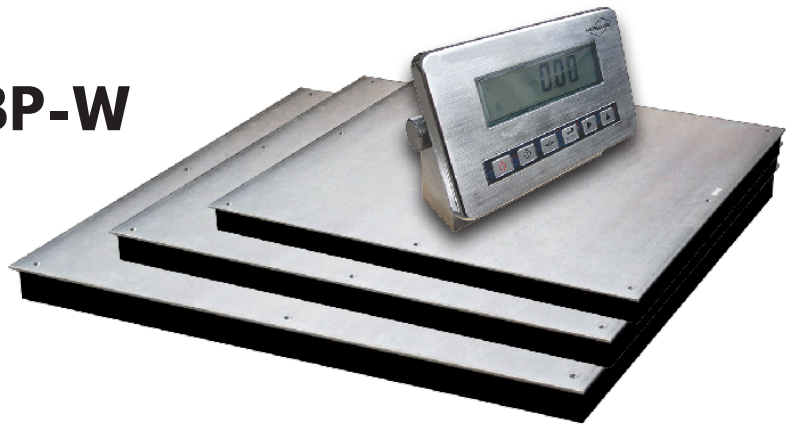


Platform Size	Capacity
3ft x 3ft	2,000lb - 6,000lb
4ft x 4ft	2,000lb - 6,000lb
5ft x 5ft	2,000lb - 6,000lb
4ft x 4ft	10,000lb

Platform Size	Capacity
5ft x 5ft	10,000lb
5ft x 5ft	20,000lb
5ft x 6.5ft	20,000lb
6.5ft x 6.5ft	20,000lb

Waterproof Scale Platform Model PBP-W

- Capacity 2,000lb to 6,000lb
- Measures: 3x3ft, 4x4ft, 5x5ft
- 4 SS load cell IP-67
- SS weighing indicator
- 3 Operation mode
- Full Stainless Steel

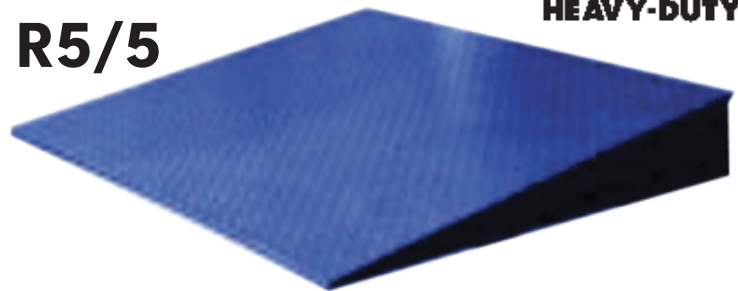


Platform Size	Capacity
3ft x 3ft	2,000lb
3ft x 3ft	4,000lb
4ft x 4ft	2,000lb
4ft x 4ft	4,000lb

Platform Size	Capacity
4ft x 4ft	6,000lb
5ft x 5ft	2,000lb
5ft x 5ft	4,000lb
5ft x 5ft	6,000lb

Floor Scale Access Ramps R3/3; R4/4; R5/5

- Capacity 1klb to 10klb
- Measure: 3x3ft, 4x4ft, 5x5ft
- Carbon steel, rough deck with diamond pattern
- Stainless Steel: smooth deck



HD
HEAVY-DUTY

Platform Size	Material
3ft x 3ft	Carbon Steel
4ft x 4ft	
5ft x 5ft	
4ft x 4ft	4,000lb

Platform Size	Material
3ft x 3ft	Stainless Steel
4ft x 4ft	
5ft x 5ft	
4ft x 4ft	4,000lb

Livestock Pen J3/3, J4/4, J5/5

- Measures: 3x3ft, 4x4ft, 5x5ft
- Carbon Steel
- Sliding Gates



Bovine Scale PGV-6000

- Capacity 6,000lb/2lb
- With or Without livestock Cage.
- Measures: H: 6.5ft, L: 8.8ft, B: 4.2ft
- Carbon Steel Housing
- Wood deck

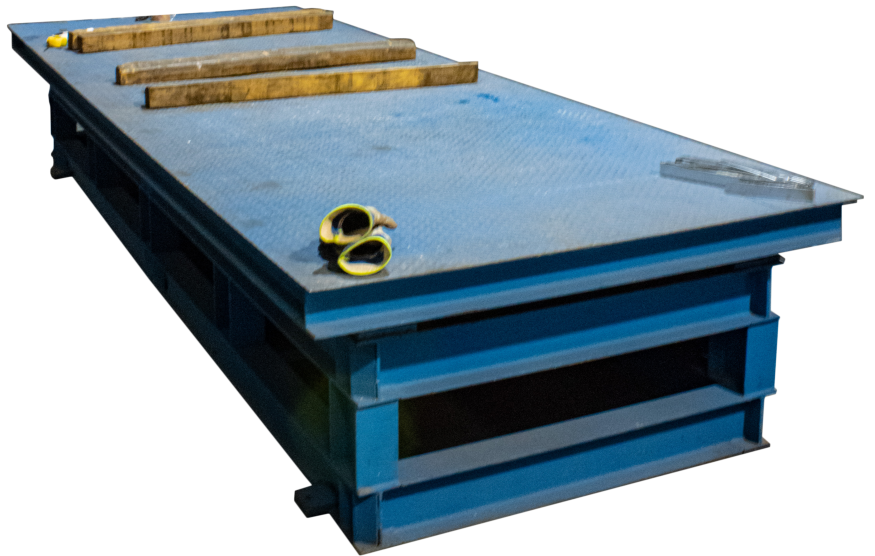
Portable Pork Scale PGP-1000

- Capacity 1,000lb/0.5lb
- Measures: H: 4ft, L: 4ft, B: 2.3ft
- In and Out Gates
- Smooth Carbon steel Deck

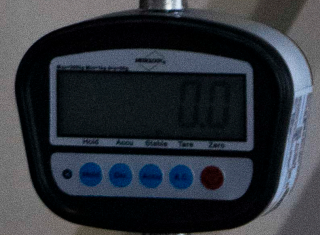
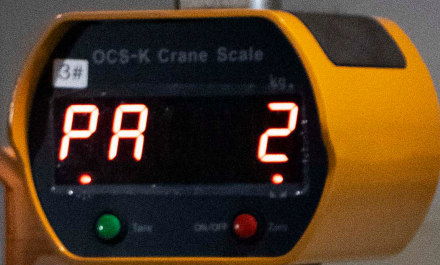
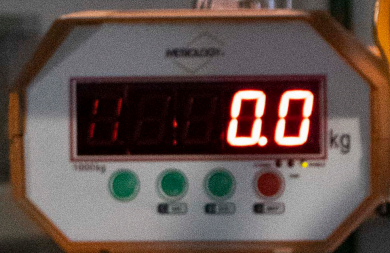


Floor Scale for special Usage

- Reinforced, Heavy Duty
- Weighing Units: lb, kg, oz.
- Option to install over beam table
- Weighing light trucks
- Easy Transportation
- Capacity: 20,000lb/4lb, 30,000lb/10lb, 40,000lb/10lb



Platform Size	Material
3ft x 3ft	Carbon Steel
4ft x 4ft	
5ft x 5ft	
4ft x 4ft	4,000lb



HANGING/CRANE SCALES

Portable Hanging Scale Model BGP

- Capacity 661 lb, 1100 lb
- Weight sum function.
- Operates with alkaline batteries (AAA)



Portable Crane Scale Model BG-600, 1000

- Capacity 600lb, 1000lb
- Weighing Units: lb
- Weighing SUM Function
- Rechargeable Battery
- Remote Control

Crane Scale BG-WiFi

- *Capacity 2,000lb, 6,000lb, 10,000lb, 20,000lb
- *Weighing Units: lb
- *Weighing SUM Function
- *Rechargeable Battery
- *WiFi remote printer indicator



High Temperature Crane Scale BG-HT

- Capacity 20klb & 30 klb
- Weighing Units: lb, kg
- Wi-Fi remote printing indicator
- Rechargeable Battery
- High Temperature Proof



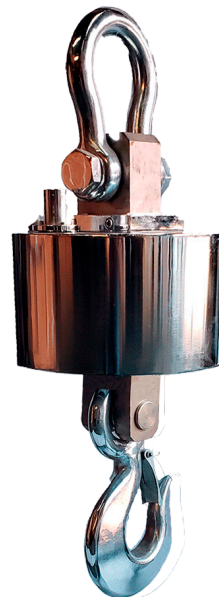
Remote Display Wi-Fi Crane Scale BGWI

- Capacity 30klb & 40 klb
- Weighing Units: lb
- Wi-Fi remote indicator
- Rechargeable Battery
- Remote Big Display 5"



WiFi Crane Scale BGWIP

- Capacity 10,000lb, 20,000lb, 60,000lb
- Weighing Units: lb, kg
- Wi-Fi remote printing indicator
- Rechargeable Battery
- Heavy Duty Housing



REVUELTA.
 BASCULAS REVUELTA MAZA, S.A. de C.V.
 Laboratorio de Calibración
 Acreditación No. M-19
INSTRUMENTO CALIBRADO
 No. Referencia 8517

REVUELTA.
 BASCULAS REVUELTA MAZA, S.A. de C.V.
 Laboratorio de Calibración
 Acreditación No. M-19
INSTRUMENTO CALIBRADO
 No. Referencia 8017

00.6500 kg

Gross Net weight Stable Tare Zero

QDI-11 Weight Indicator

1	2	3	Address	Calibration	Truck Number	Goods Number
4	5	6	Adjust Corners	Settings	Statistical	Cancel
7	8	9	Testing	Date Time	Re-Print	Tare
Weight	0	Enter	F1	Store Tare	Print	Zero

Folder containing documents with labels: "TENDENCIA", "Alvaro", "Clavio", "Gob", "ES", "DGE".

	IDENTIF.	SISTEMA
PER	11	00003
MARTINEZ	14	00012
	15	00013
	16	00005
	17	00006
VALLE	18	00007
MENDOZA	21	00008
IN PEREZ		

Olea

Empresa: Alfredo Argonza S.A. de C.V.
 Lugar: Carles Cruz
 Calle: Playa Serevilla
 Teléfono: 6750 4221

HDvoice

WEIGHING INDICATORS

Weight Indicator Model B2

- Specific Usage: None (General Use)
- LCD Display
- nmax: 10,000
- Weight Units: lb/kg
- Multi-Functions: Weighing Verification, Over-Under, Counting Function
- RS-232 Serial Port
- Rechargeable Battery



Weight Indicator Model B2Plus

- Specific Usage: None (General Use)
- LCD Display
- nmax: 10,000
- Weight Units: lb/kg
- Multi-Functions: 100 weight memories, Over-Under, Printing function, Counting Function
- RS-232 Serial Port
- Rechargeable Battery

Weight Indicator Model IPP-T

- Specific Usage: None (General Use)
- Stainless steel Case
- Stainless Steel Keyboard
- Price Computing Function
- LCD Display
- Charge by Power Cord
- nmax: 10,000
- Weight Units: lb
- Rechargeable Battery



Weight Indicator Model B1

- Specific Usage: None (General Use)
- 2.3" Numbers on display
- LCD Display
- nmax: 15,000
- Weight Units: lb
- Multi-Functions: Weight Sum, Dynamic Load Filter
- RS-232 Serial Port
- Rechargeable Battery



Weight Indicator Model MI-207RS

- Specific Usage: None (General Use)
- Stainless Steel Case
- LED Display
- nmax: 100,000
- Weight Units: lb/kg/oz
- Multi-Functions: Over-Under, Weighing verification, Counting Function
- RS-232 Serial Port
- Freeze Weight on Screen



Weight Indicator MI-209G

- Specific Usage: Livestock Scale
- LCD Display
- nmax: 20,000
- Weight Units: lb/kg/oz
- Counting Function
- Dynamic Load Filter
- Rechargeable Battery
- Displays Information



Weight Indicator Model MI-210W

- Specific Usage: Very High Humidity
- Stainless Steel Case
- Sealed IP-67
- LCD Display
- nmax: 400,000
- Weight Units: lb/kg/g/ton/oz
- Multi-Functions: Over-Under, Counting function, Dynamic Load Filter
- Rechargeable Battery



Remote Display Model VR-3 / VR-5

- Specific Usage: None (General Use)
- Plastic Housing
- LED Display
- 3" & 5" Display Numbers
- Application: Only METROLOGY Indicator
- -B1
- -B2
- -MI-207RS
- -MI-210W
- -A3 / A3+P



REMOTE DISPLAY VR

Model VR-3HD

- Specific Usage: None (General Use)
- Stainless Steel Housing
- Operating voltage: 220Vac
- Heavy Duty, Outdoors (Not Waterproof)
- LED Display
- 3" Display Numbers
- Application: Only METROLOGY Indicator
- -MDI-11
- -BGWI
- -A3 / A3+P

Model VR-5HD

- Specific Usage: None (General Use)
- Stainless Steel Housing
- Operating voltage: 220Vac
- Heavy Duty, Outdoors (Not Waterproof)
- LED Display
- 5" Display Numbers
- Application: Only METROLOGY Indicator
- -MDI-11
- -BGWI
- -A3 / A3+P

Model VR-8HD

- Specific Usage: None (General Use)
- Stainless Steel Housing
- Operating voltage: 220Vac
- Heavy Duty, Outdoors (Not Waterproof)
- LED Display
- 8" Display Numbers
- Application: Only METROLOGY Indicator
- -MDI-11
- -BGWI
- -A3 / A3+P

HD
HEAVY-DUTY

Weight Indicator Model A3/A3+P

- Specific Usage: Truck Scale
- Alloy steel Case
- With or Without Ticket Printer
- Thermal Printer
- nmax: 10,000
- LED Display
- Weight Units: lb
- Date & Hour Data
- Serial Port RS-232
- Parallel Port
- 1000 License Plate Registration
- 1000 Product Registration
- Reporting and statics



Weight Indicator Model MDI-11

- *Specific Usage: Truck Scale
- *Stainless Steel Case
- *With Ticket Printer
- *Ink Printer
- *nmax: 10,000
- *LED Display
- *Weight Units: lb
- *Date & Hour Data
- *Serial Port RS-232
- *Parallel Port
- *Reporting and statics
- *1000 Product Registration
- *1000 License Plate Registration
- *Operating Voltage: 110Vac



Transmitter-Receiver WiFi

- *Specific Usage: None (General use)
- *Aluminum Case
- *Signal range 328ft for free
- *easier installation
- *Application: All MTY METROLOGY weight indicators





ALMACEN PRINCIPAL

CODIGO

313235C322115A

INTA BANDA BONNE 3 DIENTES, ESPESOR 22, MEDIDA
115" (AMARILLO)



313235C322115A

15/02/23

Piezas

100

LOAD CELLS

Load Cell Model CCM

- Capacity: 5kg, 8kg, 15kg, 20kg, 30kg, 40kg
- Specific Usage: Counter Scale
- Single Beam
- nmax: 6,000
- Output 2mV/V
- Anodized Aluminum
- Measures: H:0.9" x L:4.2" x W:1.2"



Load Cell Model BPDO

- Capacity: 100kg, 200kg
- Specific Usage: Receiving and Warehouse Scale
- Single Beam
- nmax: 6,000
- Output 2mV/V
- Anodized Aluminum
- Measures: H:1.6" x L:6.7" x W:1.4"

Load Cell Model BPR

- Capacity: 150kg, 300kg, 500kg
- Specific Usage: Receiving and Warehouse Scale
- Single Beam
- nmax: 6,000
- Output 2mV/V
- Anodized Aluminum
- Measures: H:1.6" x L:7.9" x W:1.6"



Load Cell Model CB1

- Capacity: 500kg, 1000kg
- Specific Usage: Receiving and Warehouse Scale
- Single Beam
- nmax: 6,000
- Output 2mV/V
- Anodized Aluminum
- Measures: H:2.6" x L:7.9" x W:2.4"



Load Cell Model SHB

- Capacity: 500kg, 1000kg, 2000kg, 3000kg
- Specific Usage: Floor scale
- Shear Beam
- nmax: 6,000
- Output 2mV/V
- Nickel Plated steel
- Stainless steel
- Measures: H:1.25" x L:5.1" x W:1.25"



Load Cell Model SHB

- Perimeter mounting with leveling feet
- Capacity: 5000kg
- Specific Usage: Floor scale
- Shear Beam
- nmax: 6,000
- Output 2mV/V
- Nickel Plated steel
- Measures: H:1.5" x L:7" x W:1.5"



Load Cell Model SHB

- Perimeter mounting with leveling feet
- Specific Usage: High-Capacity Platform
- Shear Beam
- nmax: 6,000
- Output 2mV/V
- Nickel Plated steel
- Measures & Capacity:
- -10000kg: H:5" x L:11" x W:2.4"
- -20000kg: H:5.6" x L:12.5" x W:2.8"



Load Cell Model TSA & TSG

- Type “S”
- Application: Hanging & Crane scale
- nmax: 3,000
- Output 2mV/V
- Nickel Plated steel
- Measures & Capacity:
 - 100kg: H:3” x T:0.6” x W:2” x M12
 - 200kg: H:3.2” x T:1” x W:2.6” x M12

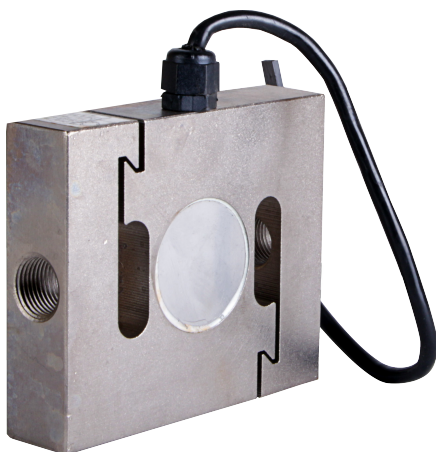


Load Cell Model SHBR

- Perimeter mounting with Ball Joint
- Specific Usage: High-Capacity Platform
- Shear Beam
- nmax: 6,000
- Output 2mV/V
- Nickel Plated steel
- Measures & Capacity:
 - 10000kg: H:5” x L:11” x W:2.4”
 - 20000kg: H:5.6” x L:12.5” x W:2.8”

Load Cell Model TSA

- Type “S”
- Application: Hanging & Crane scale
- nmax: 3,000
- Output 2mV/V
- Nickel Plated steel
- Measures & Capacity:
 - 100kg: H:3” x T:0.6” x W:2” x M8
 - 200kg: H:3” x T:0.7” x W:2” x M12
 - 300kg: H:3” x T:0.7” x W:2” x M12

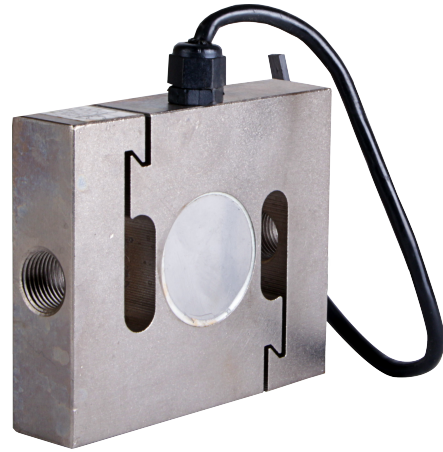


Load Cell Model TSG

- Type “S”
- Application: Hanging & Crane scale
- nmax: 3,000
- Output 2mV/V
- Nickel Plated steel
- Measures & Capacity:
 - 2000kg: H:4.3” x T:1” x W:3.8” x M8*1.5
 - 3000kg: H:4.3” x T:1” x W:3.8” x M8*1.5
 - 5000kg: H:4.3” x T:1” x W:3.8” x M8*1.5

Load Cell Model TSG

- Type “S”
- Application: Hanging & Crane scale
- nmax: 3,000
- Output 2mV/V
- Nickel Plated steel
- Measures & Capacity:
 - 10ton: H:7” x T:2” x W:5.1” x M30*2
 - 20ton: H:7.5” x T:2” x W:6.3” x M30.2



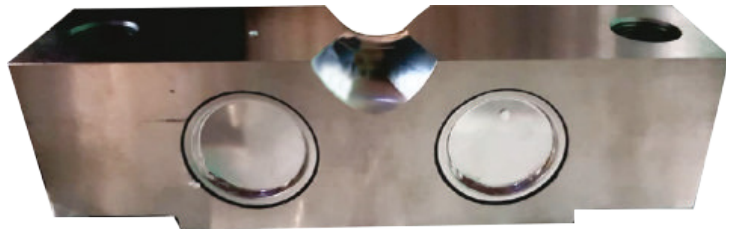
Load Cell Model QS

- Included Extra Mounting
- Specific Usage: High-Capacity Platform
- Double Beam
- nmax: 3,000
- Output 3mV/V
- Nickel Plated steel
- Measures & Capacity:
 - 30000kg: H:9” x L:9.5” x W:5.3”



Load Cell Model QSB R

- Extra Mounting Not Included
- Specific Usage: High-Capacity Platform
- Double Beam
- nmax: 3,000
- Output 3mV/V
- Nickel Plated steel
- Measures & Capacity:
 - 75klb: H:3” x L:10.3” x W:2.4”



Load Cell Model QSB R

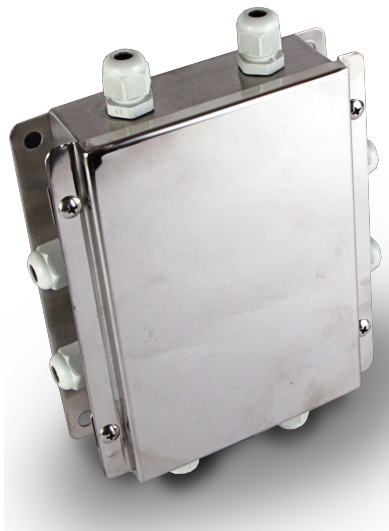
- Perimeter Mounting (Included)
- Specific Usage: High-Capacity Platform
- Double Beam
- nmax: 3,000
- Output 3mV/V
- Nickel Plated steel
- Stainless Steel
- Measures & Capacity:
 - 30000kg: H:2.8” x D:2” x W:3.2”



JUNCTION BOX

Junction Box Model CS-4AI

- Signal
- Stainless steel
- Capacity: 4 Cells
- Adjustment Potentiometer
- Sealing IP-67
- Max. Voltage: 18Vdc
- Operation Temperature: 14°F - 122°F
- Cable diameter: 0.2"-0.3"

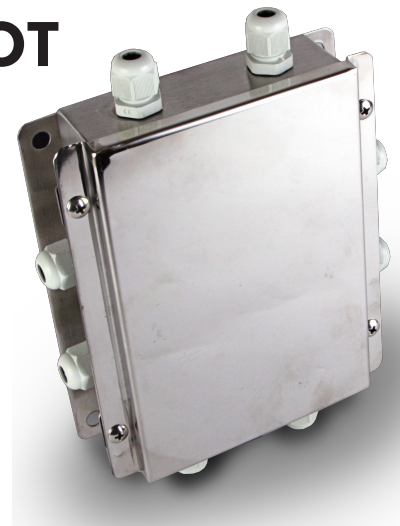


Junction Box Model CS-8AI

- Signal
- Stainless steel
- Capacity: 8 Cells
- Adjustment Potentiometer
- Sealing IP-67
- Max. Voltage: 18Vdc
- Operation Temperature: 14°F - 122°F
- Cable diameter: 0.2"-0.3"

Junction Box Model CS-8AI POT

- Excitation
- Stainless steel
- Capacity: 8 Cells
- Adjustment Potentiometer
- Sealing IP-67
- Max. Voltage: 18Vdc
- Operation Temperature: 14°F - 122°F
- Cable diameter: 0.2"-0.3"



PATTERN WEIGHTS

MTY METROLOGY Weight Patterns

- General Usage
- Accuracy Class F1 & M1
- Stainless Steel
- Range F1: 50g, 100g, 200g, 500g
- Range M1: 50g, 100g, 200g, 500g, 1kg, 2kg
- Glossy Finish



Frame of Pattern Weights

- *General Usage
- *Accuracy Class M1
- *Stainless Steel
- *Range: 1kg-5kg
- *Glossy Finish

Frame of Pattern Weights

- *General Usage
- *Accuracy Class F1
- *Stainless Steel
- *Range: 1mg-2kg
- *Glossy Finish



Pattern Weights Class III

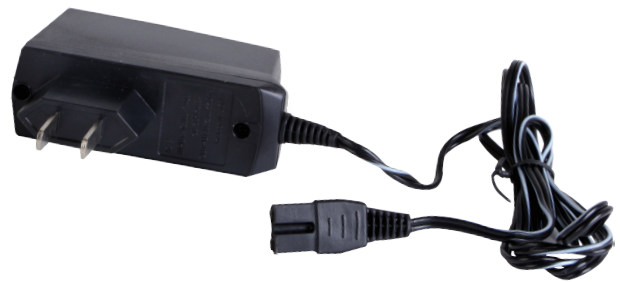
- General Usage
- Accuracy Class M3
- Alloy Steel
- Range: 5kg, 10kg, 20kg, 25kg
- Steel Deck
- Range: 500kg, 1000kg
- Covered in Epoxy Paint



BATTERIES & CHARGERS

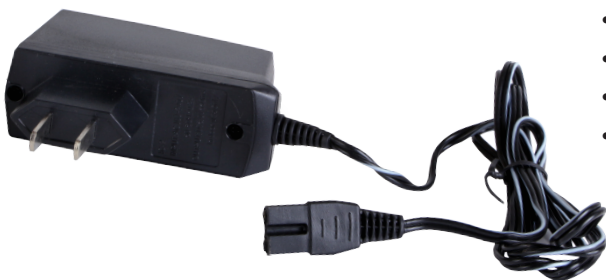
Charger model: IC-2

- 5Vdc, 0.5A Charger
- Application: Charges 4Vdc battery
- Scales: BPP-80W, BPP-80RS, BCH, BG
- Weight Indicators: B2, B2PLUS



Charger model: LH

- 7Vdc, 0.5A Charger
- Application: Charges 6Vdc battery
- Scales: BG
- Weight Indicators: B1



Charger model: MI

- 9Vdc, 0.5A Charger
- Application: Charges 7.5Vdc battery
- Scales: BMW, BPR, BPX, PYB
- Weight Indicators: MI-207, IC-Wi-Fi



Rechargeable Battery 4Vdc

- Lead-Acid 4Vdc, 4-5Ah
- Application:
- Scales: BPP-80W, BPP-80RS, BCH, BG
- Weight Indicators: B2, B2PLUS



Rechargeable Battery 6Vdc

- Lead-Acid 6Vdc, 4-5Ah
- Application:
- *Scales: BG
- *Weight Indicators: B1

Rechargeable Battery 9Vdc

9Vdc, 0.5A Charger

- Application: Charges 7.5Vdc battery
- Scales: BMW, BPR, BPX, PYB
- Weight Indicators: MI-207, IC-Wi-Fi



heavy duty power cord

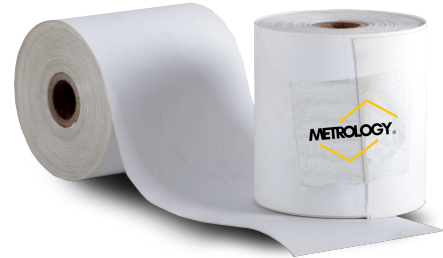
- 3 Cord, 14-gauge, American style plug
- Application:
- Scales: Barcode and labeling scales, BPP-80, BPPR, BPW
- Weight Indicators: A2, IPP-T



LABEL & TICKETS

Thermal Ticket for A1 & A3

- Code: ROLLTICK
- Application: BCR Scale, Weight Indicators A1 & A3
- Direct Thermal Printing
- Measures: 1.7" x 394"



LABEL ROLL

- **ETI-1000**
Size: 2.3" x 1.5"
Application: MEGABIE, BIE, A2
Thermal Printing
- **ETI-400**
Size: 2" x 3"
Application: MEGABIE, BIE, A2
Thermal Printing
- **ETI-1500**
Size: 2.3" x 1.5"
Application: Other BRANDS
Thermal Printing

- **ETICON (Continuous)**
Size: 2" x 1,102"
Application: MEGABIE, BIE, A2
Thermal Printing

Thermal Ticket for BIE & A2

- Application:
 - BIE & MEGABIE Scale
 - Weight Indicators A1 & A3
- Direct Thermal Printing
- Measures: 1.7" x 1,970"





TRUCK SCALES

FULL STEEL MANUFACTURED

Full Steel Semi-Fixed Scale: Scale Made of steel to install ABOVE FLOOR, Coated with marine grade paint. Delivered ready to install (only requires assembly); Its modular design makes it easy to transport and assemble. Does NOT require special permission to transport with excess dimensions; therefore saves transportation cost.



ACCESORIES (NOT INCLUDED):

Remote Display Heavy Duty 5" & 8"



SCALE INCLUDES:

- 1 Access Ramp (2 modules) 6.5ft Length X 4ft Width.
- Electronic Weight Indicator MDI-11.
- Administrator Truck Scale Software.

REQUIRED MODULES BY TYPE OF VEHICLE

Pick up and light vehicles

MODEL	#SECTIONS	#MODULES	#RAMPS	TOTAL LENGTH
BC-6ACP-30T	1 Sections of 19.6ft x 9.8ft	2 Modules of 6.5ft x 3.9ft	2 Modules of 6.5ft x 3.9ft	26.24ft

Torton and 21" Trucks

MODEL	#SECTIONS	#MODULES	#RAMPS	TOTAL LENGTH
BC-12ACP-60T	2 Sections of 19.6ft x 9.8ft	4 Modules of 6.5ft x 3.9ft	2 Modules of 6.5ft x 3.9ft	45.93ft

Articulated truck with 40' box

MODEL	#SECTIONS	#MODULES	#RAMPS	TOTAL LENGTH
BC-18ACP-80T	3 Sections of 19.6ft x 9.8ft	6 Modules of 6.5ft x 3.9ft	2 Modules of 6.5ft x 3.9ft	65.61ft



Full Steel Fixed Scale: Scale Made of steel to install in pit or on the floor with access ramps, Covered with electrostatic painting. Delivered ready to install (only requires assembly); Its modular design makes it easy to transport and assemble. Does NOT require special permit for transportation with excess dimensions; therefore saves transportation.



ACCESORIES (NOT INCLUDED):

Remote Display Heavy Duty 5" & 8"



SCALE INCLUDES:

- Electronic Weight Indicator MDI-11.
- Administrator Truck Scale Software

Torton & Simple Trucks of 21'

MODEL	CAPACITY	LENGT	No. SECTIONS	#MODULES	No. CELLS
BC-CO-50T BC-CO-60T	100klb/10lb 120klb/20lb	39.4ft	2 Sections of 19.6ft x 9.8ft	4 modules of 19.6 ft x 4.9 ft	6 Cells of 60klb

Truck with Articulation in single box of 40'

MODEL	CAPACITY	LENGT	No. SECTIONS	# MODULES	No. CELLS
BC-CO-60T BC-CO-80T	120klb/20lb 160klb/20lb	59ft	3 Sections of 19.6ft x 9.8ft	6 modules of 19.6ft x 4.9ft	8 Cells of 60klb

Truck with Articulation in single box of 53'

MODEL	CAPACITY	LENGT	No. SECTIONS	# MODULES	No. CELLS
BC-CO-80T BC-CO-100T	160klb/20lb 200klb/20lb	78.7ft	4 Sections of 19.6ft x 9.8ft	8 modules of 18.04 ft x 4.9ft	10 Cells of 60klb

Double Box Truck (FULL)

MODEL	CAPACITY	LENGT	No. SECTIONS	# MODULES	No. CELLS
BC-CO-100T	200klb/20lb	98.5ft	5 Sections of 19.6ft x 9.8ft	10 modules of 19.6 x 4.9ft	12 Cells of 60klb



Installation with access ramps is ideal when there is enough space to maneuver in and out of the scale, the necessary distance for maneuvers is 223ft additional to the length of the scale (19.6ft length is estimated for each ramp + 92m for the turning radius in simple trucks and with articulation in a single Box, this for both the entrance and exit of the scale). on the scale of 98.5ftm, an additional 254.3ft is required to the length of the scale (19.6ft length is estimated for each ramp + 157.5ft for the turning radius of double Box trucks (FULL), this for both the entrance and the exit of the scale).



ACCESORIES (NOT INCLUDED):

Remote Display Heavy Duty 5" & 8"



SCALE INCLUDES:

- Electronic Weight Indicator MDI-11.
- Administrator Truck Scale Software

Torton & Simple Trucks of 21'

MODEL	CAPACITY	LENGT	No. SECTIONS	INSTALATION	No. CELLS
BC-CO-50T BC-CO-60T	100klb/10lb 120klb/20lb	39.4ft	2 Sections of 19.6ft x 9.8ft	Ramps	6 Cells of 60klb
Truck with Articulation in single box of 40'					
MODEL	CAPACITY	LENGT	No. SECTIONS	INSTALATION	No. CELLS
BC-CO-60T BC-CO-80T	120klb/20lb 160klb/20lb	59ft	3 Sections of 19.6ft x 9.8ft	Ramps	8 Cells of 60klb
Truck with Articulation in single box of 53'					
MODEL	CAPACITY	LENGT	No. SECTIONS	INSTALATION	No. CELLS
BC-CO-80T BC-CO-100T	160klb/20lb 200klb/20lb	78.7ft	4 Sections of 19.6ft x 9.8ft	Ramps	10 Cells of 60klb
Double Box Truck (FULL)					
MODEL	CAPACITY	LENGT	No. SECTIONS	INSTALATION	No. CELLS
BC-CO-100T	200klb/20lb	98.5ft	5 Sections of 19.6ft x 9.8ft	Ramps	12 Cells of 60klb



Installation with access ramps

Installation in Pit is recommended when there is not enough space to carry out maneuvers; It is essential to install a suitable drainage system that avoids accumulations of water inside the pit.



ACCESORIES (NOT INCLUDED):

Remote Display Heavy Duty 5" & 8"



SCALE INCLUDES:

- Electronic Weight Indicator MDI-11.
- Administrator Truck Scale Software

Torton & Simple Trucks of 21'

MODEL	CAPACITY	LENGT	No. SECTIONS	INSTALATION	No. CELLS
BC-CO-50T BC-CO-60T	100klb/10lb 120klb/20lb	39.4ft	2 Sections of 19.6ft x 9.8ft	Ramps	6 Cells of 60klb
Truck with Articulation in single box of 40'					
MODEL	CAPACITY	LENGT	No. SECTIONS	INSTALATION	No. CELLS
BC-CO-60T BC-CO-80T	120klb/20lb 160klb/20lb	59ft	3 Sections of 19.6ft x 9.8ft	Ramps	8 Cells of 60klb
Truck with Articulation in single box of 53'					
MODEL	CAPACITY	LENGT	No. SECTIONS	INSTALATION	No. CELLS
BC-CO-80T BC-CO-100T	160klb/20lb 200klb/20lb	78.7ft	4 Sections of 19.6ft x 9.8ft	Ramps	10 Cells of 60klb
Double Box Truck (FULL)					
MODEL	CAPACITY	LENGT	No. SECTIONS	INSTALATION	No. CELLS
BC-CO-100T	200klb/20lb	98.5ft	5 Sections of 19.6ft x 9.8ft	Ramps	12 Cells of 60klb





WWW.BASCULASMETROLOGY.COM.MX



(800) 824 - 1644 / (832) 675 - 9699



sales@concassea.com